

Bachelor of  
**Social Work Program**

RESEARCH | TEACHING | SERVICE



**School of Social Work**  
**UNIVERSITY OF GEORGIA**

*Advocates for positive social change*





# School of Social Work

## UNIVERSITY OF GEORGIA

---

*Advocates for positive social change*

“The School of Social Work at the University of Georgia prepares culturally responsive practitioners and scholars to be leaders in addressing social problems and promoting social justice, locally and globally, through teaching, research, and service.”

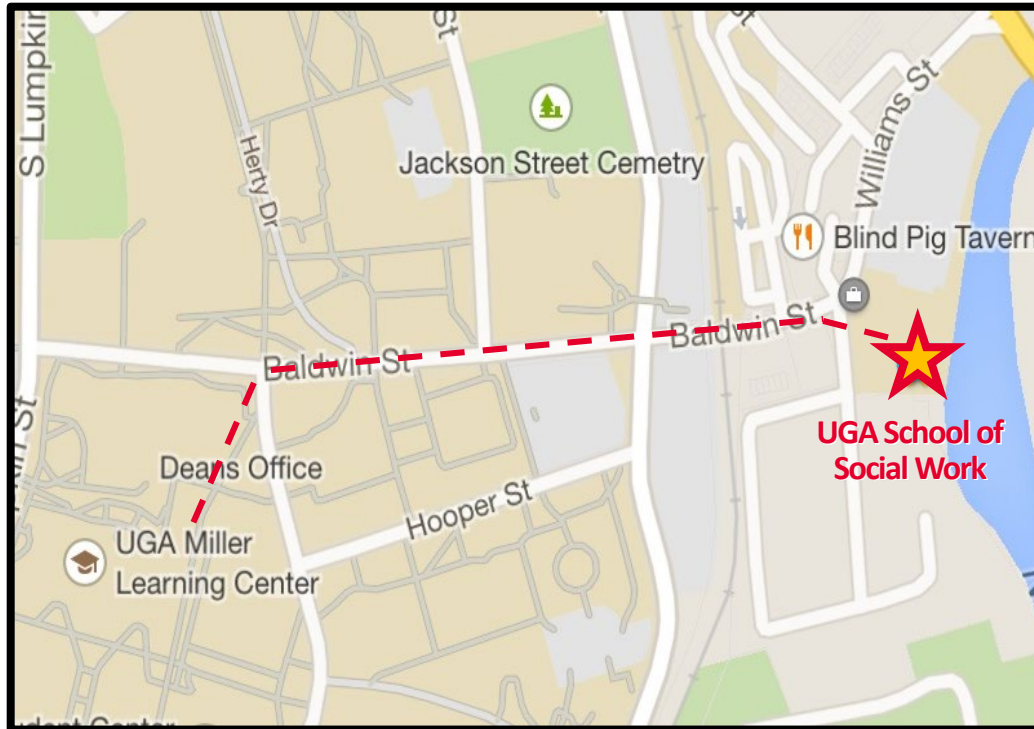
# The School of Social Work

279 Williams Street, Athens, GA 30602





# The School of Social Work



The School of Social Work  
279 Williams Street  
Athens, GA 30602

# Social Work 101:

---

Debunking common myths and misunderstandings  
related to the field of social work



# What is social work?

---

## Social work (n.)

“a practice-based profession and an academic discipline that promotes **social change and development, social cohesion, and the empowerment and liberation of people...** Underpinned by theories of social work, social sciences, humanities and indigenous knowledge, **social work engages people and structures to address life challenges and enhance wellbeing.**”



# Mission of social work

---

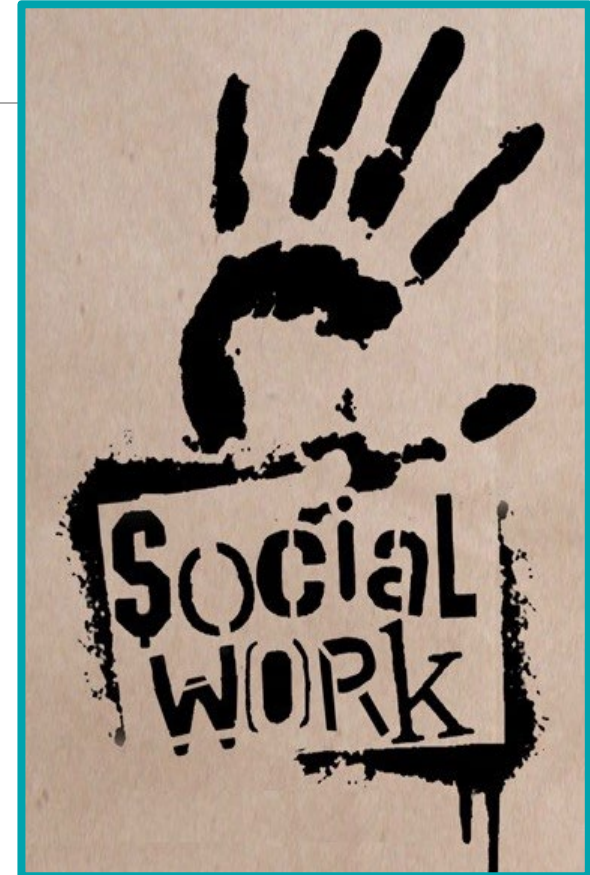
“The primary mission of the social work profession is to enhance human well-being and help meet the basic human needs of all people, with particular attention to the needs and empowerment of people who are vulnerable, oppressed, and living in poverty.”





# Principles of Social Work

- Service
- Social justice
- Dignity and worth of the person
- Importance of human relationships
- Integrity
- Competence







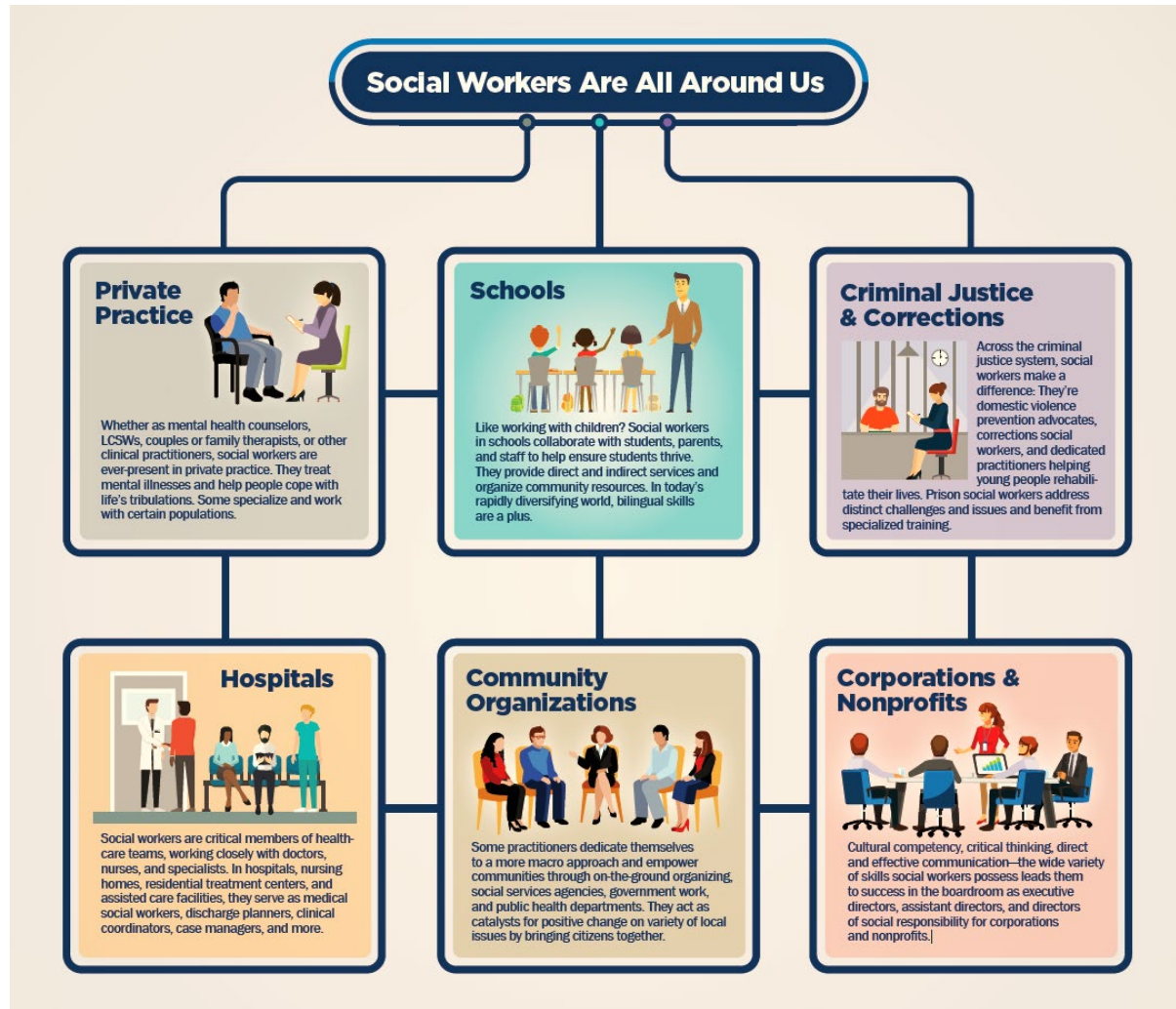
# Jobs in Social Work

---

- Activities director
- Adoption case manager
- Advisor
- Behavior specialist
- Bereavement counselor
- Care coordinator
- Case Manager
- Child and Family Therapist
- Clinician
- Community Assistant
- Community Developer
- Community Educator
- Counselor
- Crisis Referral Specialist
- Curriculum & Consulting
- DFCS Service Specialist
- Director of Children's Services
- Forensic Social Worker
- Foster Care Social Worker
- Fundraising Chair
- Grants Manager
- Homeless Advocate
- Hospice Social Work
- Investigator
- Juvenile Probation Officer
- Medical Social Worker
- Mental Health Practitioner
- Military Social Worker
- Non-Residential Director
- Oncology Social Worker
- Outpatient Therapist
- Outreach Coordinator
- Patient Services Manager
- Preventative Case Planner
- Program Services Coordinator
- Project Coordinator
- Research Associate
- Residential Manager
- School Social Worker
- Shelter Coordinator
- Social Justice Advocate
- Social Services Specialist
- Substance Abuse Counselor
- Therapeutic Day Treatment Specialist
- Therapist

# Social Work: *the profession of helping people*

Social work is one of the most versatile professions. It offers the flexibility to work with a variety of populations in a wide range of contexts and does not require a new degree every time a career-shift is desired.



# Social workers...

Feed the hungry

*Shelter the homeless*

Protect the children

Advocate for the infirm

**Counsel the distressed**

*Empower the victims*

Research best practices

Inform government

**Protect the vulnerable**

Challenge discrimination

PROMOTE POSITIVE CHANGE

*Give a voice to the voiceless*

**...change the world!**

# Social Work TODAY:

Over **40%** of all disaster mental health volunteers trained by the American Red Cross are professional social workers.

About **54%** of social work jobs are in healthcare and social services.

There are **642,000** social workers in the U.S.

**31%** of social workers are employed by states or the federal government.

Social work employment is projected to **grow faster** than the average for all occupations.

Average salary for a social worker is **\$50,470**.

# Bachelor's of Social Work

---

BSW Program Features & Requirements at UGA



**BSW Class of 2019**

# BSW Program Highlights

- Ranked #6 BSW Program in the nation\*
- Professional, accredited degree by CSWE
- Classroom and hands-on field training
  - Senior field practicum experience
  - Senior Capstone project
  - Graduate-level coursework
- “Advanced Standing” eligibility
  - >> fast track to a master’s degree
  - BSW students need only 1 additional year of school to earn an MSW
- Ability to study abroad or pursue a dual degree, minor, certificate or Double Dawgs pathway



**UNIVERSITY OF  
GEORGIA**  
School of Social Work



# University Requirements

---

Cumulative GPA:	Minimum 2.0+ GPA
Cultural Diversity:	Satisfied by <b>SOWK 2156</b> (3)
Environmental Literacy:	Satisfied by <i>Environmental Impact</i> requirement
Federal & Georgia Constitution:	<b>POLS 1101</b> (3) or Exemption Exam
US & Georgia History:	<b>HIST 2111</b> (3) or <b>HIST 2112</b> (3) or Exemption Exam
First-Year Odyssey:	<b>FYOS</b> (1)
Experiential Learning:	Satisfied by <b>SOWK 2157S</b> (1)
Physical Education:	<b>PEDB</b> (1)





# BSW Required Core Courses

---

**AREA I:** ENGL 1101 (3)  
ENGL 1102 (3)  
MATH 1101+ (3) or STAT 2000 (4)

**AREA II:** One **Life Science** course (3-4)  
One **Physical Science** course (3-4)



One Area II course should  
be used to also satisfy the  
*Environmental Impact*  
major requirement.

**AREA III:** One *Data & Digital Fluency* course (3-4)

**AREA IV:** World Language & Culture (12)  
Humanities & Arts: Satisfied by SOWK 2156 (3)

**AREA V:** PSYC 1101 (3)  
SOC 1101 (3) or SOC 2600 (3)  
SOWK 2154 (3)

# Additional Required BSW Courses

---

BSW Students must choose ONE course from each of the following categories:

## Data & Digital Fluency

Satisfies both Area III and the Area VI: Data & Digital Fluency Requirement

- ARTS 2100 – Strategic Visual Thinking
- BIOS 2010 – Elementary Biostatistics
- PHIL 2500 – Symbolic Logic
- STAT 2000 – Introductory Statistics
- CSCI 1210 – Computer Modeling & Science
- CSCI 1301/L – Introduction to Computing & Programming
- MATH 1060 – Mathematics of Decision Making

## Advanced Social/Psychology

- PSYC 2101 – Psychology of Adjustment
- PSYC 3230 – Abnormal Psychology
- PSYC 3200 – Cultural Psychology
- EPSY 4240 – Abnormal Child Psychology
- SOCI 3270 – Personality and Social Structure
- SOCI 3730 – Social Psychology
- ECHD 4380 – Human Development & Mental Health

## Environmental Impact

Satisfies part of Area II and UGA's Environmental Awareness Requirement.

### Life Science Options:

- BIOL 1103 / P BIO 1210 – Biology
- BIOL 1104 – Organismal Biology
- ECOL 1000 – Ecological Basis of Environmental Issues
- FANR 1100 – Natural Resources Conservation
- FANR/ECOL/GEOG 1200 – Natural History of GA

### Physical Science Options:

- GEOG 1125 – Resources, Society, and the Environment
- GEOL 1120 – Environmental Geoscience
- CRSS/WASR 1020 – Intro to Water Resources



# BSW Required Major Courses

## Lower-Division Social Work Courses:

SOWK 2154 (3) - Introduction to Social Work

SOWK 2155 (3) - Communication as a Helping Professional

SOWK 2156 (3) - Diversity, Equity & Inclusion

SOWK 2157S (1) - Service Learning in Social Work



*These courses are  
open to all  
UGA students*



# Typical Course Sequencing

Years  
1 & 2

- Begin completing University and Core requirements
- Begin lower-division SOWK courses (2154, 2155, 2156, 2157S)
- Apply to the BSW Professional Program

Year 3

**FALL**

- Finish any 2000-level SOWK courses
- Complete SOWK 5326 (Research) or SOWK 5757 (SW Elective)

**SPRING**

- Finish remaining non-major courses
- Complete SOWK 5340 (Human Behavior) and SOWK 5524 (General Practice of SW I)
- Complete additional 5000-level course

Year 4

Senior Coursework

**FALL**

- SOWK 5534** (3) – General Practice of SW II
- SOWK 5326** (3) – Social Work Research or **SOWK 5757** (3) – Current Issues/SW Elective
- SOWK 5835** (5) – Field Practicum
- SOWK 5836** (2) – Field Seminar
- SOWK 5850** (1) – Capstone Project

**SPRING**

- SOWK 5544** (3) – General Practice of SW III
- SOWK 5701** (3) – Social Welfare Policy or **SOWK 5767** (3) – Current Issues/SW Elective
- SOWK 5845** (5) – Field Practicum
- SOWK 5846** (2) – Field Seminar
- SOWK 5851** (1) – Capstone Project

# REMEMBER: Key BSW Information

---

- BSW is a professional, accredited degree program
- Practical and theoretical training
  - Required year-long field education (internship) experience during senior year
  - Graduate-level coursework
  - Capstone project and presentation
- “Advanced Standing” eligibility
  - >> Fast-track to a Master’s in Social Work
  - BSW students only need 1 additional year to earn MSW
- Flexible program sequencing
  - Ability to pursue a dual degree, minor, and/or certificate
  - Study abroad and service learning opportunities
  - Transfer students and change-of-majors welcome!



**UNIVERSITY OF  
GEORGIA**  
School of Social Work

# Study Abroad

---

Ghana and Northern Ireland



# Social Issues in Northern Ireland

- First-hand exposure to the **transgenerational impact of the violence** from the four-decade long conflict in known as “The Troubles”
- Learn and apply new models of **conflict resolution & crisis intervention**
- Understand the **impact of economic injustice, oppression & discrimination** in Northern Ireland
- **Develop self-awareness** through community participation



Offered every Maymester  
(6 credit hours)



# Interdisciplinary Study Abroad in Ghana



- Community service projects
- Travel to different regions and cultures
- **Culturally-immersive** activities and historical tours
- Time with Ghanaian University students
- Enhance students' knowledge, enrich their **appreciation of diversity** and prepare them as global citizens and future leaders

Offered every Maymester  
(6 credit hours)



# BSW Contact Information

## ACADEMIC ADVISORS:



**Ellen Pauloski, MSW**  
pauloski@uga.edu  
(706) 542-5463



**Trelle Turner**  
trelle@uga.edu  
(706) 542-5420

## ADMINISTRATION:



**Leon Banks, MSW, PhD**  
Director, BSW Program  
banks03@uga.edu



**Anna Scheyett, MSW, PhD**  
Dean and Professor  
amscheye@uga.edu



# School of Social Work

## UNIVERSITY OF GEORGIA

---

*Advocates for positive social change*